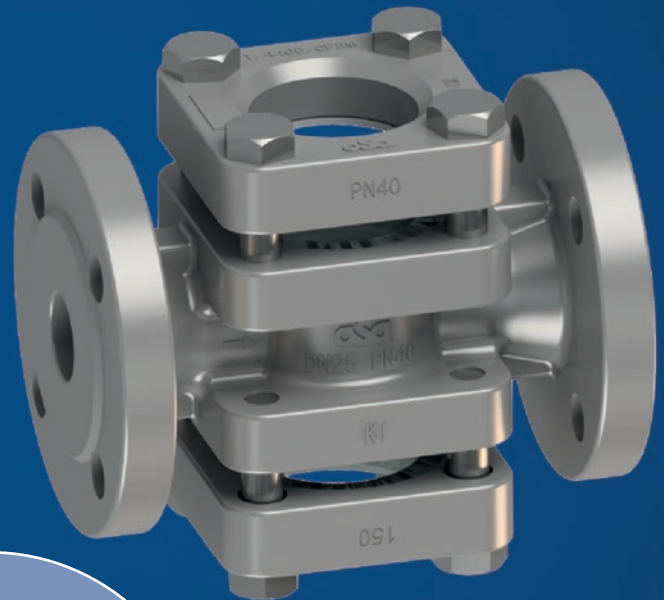


ASA
- **FLOW SIGHT GLASSES** -
MADE IN GERMANY

According to
AD 2000 A4
PED 2014 / 68 / EU
TA-Luft 2021



SIZE RANGE
DN15-DN150
NPS 1/2" - 6"

PRESSURE CLASS
DIN: PN10-PN40
ASME: CLASS 150#, 300#

asa

Armaturen-Service Alms GmbH

www.asa-alms.com

ASA

ASA FLOW SIGHT GLASSES

TECHNICAL DATA



Size range	DN15-DN150 / NPS 1/2" – 6"
Pressure class	PN10-PN40 / Cl. 150#, 300#
Materials	Carbon steel 1.0619 / WCB Stainless steel 1.4408 / CF8M Other materials on request
Sight glass-plates	Borosilicate glass (DIN7080) Soda lime glass (DIN8902) Metaglass (DIN 7079)
End connections	Flange ends / Butt weld ends Socket weld ends / Threaded ends Others on request
Face to face	EN558 – Series 1, flange ends Manufacturer Std., all others
Approvals	PED 2014 / 68/ EU, AD 2000 A4 TA-Luft 2021 EN 12516-2

ASA FLOW SIGHT GLASSES ARE MADE IN GERMANY AND HAVE THE FOLLOWING QUALITY FEATURES:

- > In-house production approved according to ISO 9001: 2015, PED 2014 / 68 / EU (Module H), AD 2000 HPO and AD 2000 A4 by TÜV
- > Design evaluation and approval of all pressure boundary parts by TÜV according to EN 12516-2 (module B acc. to PED 2014 / 68 / EU).
- > Production of all cast parts in investment casting, certified by casting manufacturers according to ISO 9001: 2015, AD 2000 W0 and PED 2014 / 68 / EU.
- > All cast parts with a certified cast quality level according to AD 2000 A4 proven by prototype and 0 series
- > All fastening screws, bolts and nuts are made of A4-70 stainless steel.
- > Product-side graphite seals according to TA-Luft 2021
- > Name plates in stainless steel with serial number, year of build and application limits ensure clear traceability.
- > Body in CS with a high-quality 2-component primer in RAL 9016 (traffic white) to ensure optimal visualization of the process media through the sight glass.



Armaturen-Service Alms GmbH

www.asa-alm.com



For more than 40 years, ASA has been a specialist for industrial valves according to DIN and ASME.

The capability portfolio covers the entire spectrum of conversion, modification, assembly of actuators and gearboxes as well as repair and reconditioning of industrial valves.

In addition, ASA is specialised in the manufacturing of high-quality sight glasses, heating jackets and insulating attachments.

Our manufacturing process meets the highest quality standards. Starting with product development and the selection of raw materials, through to manufacturing and final testing on our test benches.

The manufacturing process is undertaken in accordance with defined quality control systems, which is documented by our extensive certifications according to DIN EN ISO 9001:2015, SCC*-2011, AD 2000-Merkblatt HPO / TRD 201, DIN EN ISO 3834-2, PED 2014 / 68 / EU Modul H.

ASA is a company of the AVA Armaturen Vertrieb Alms Group.